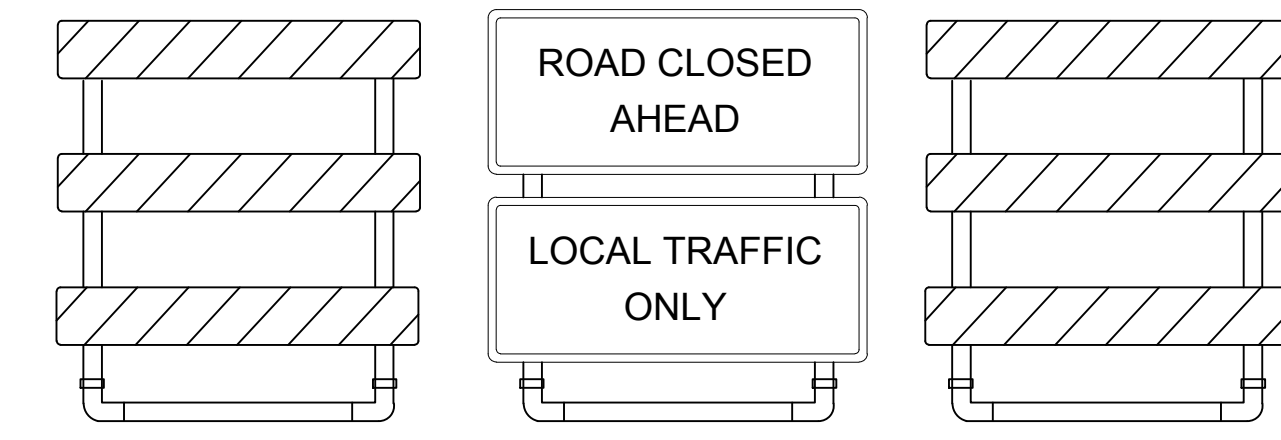
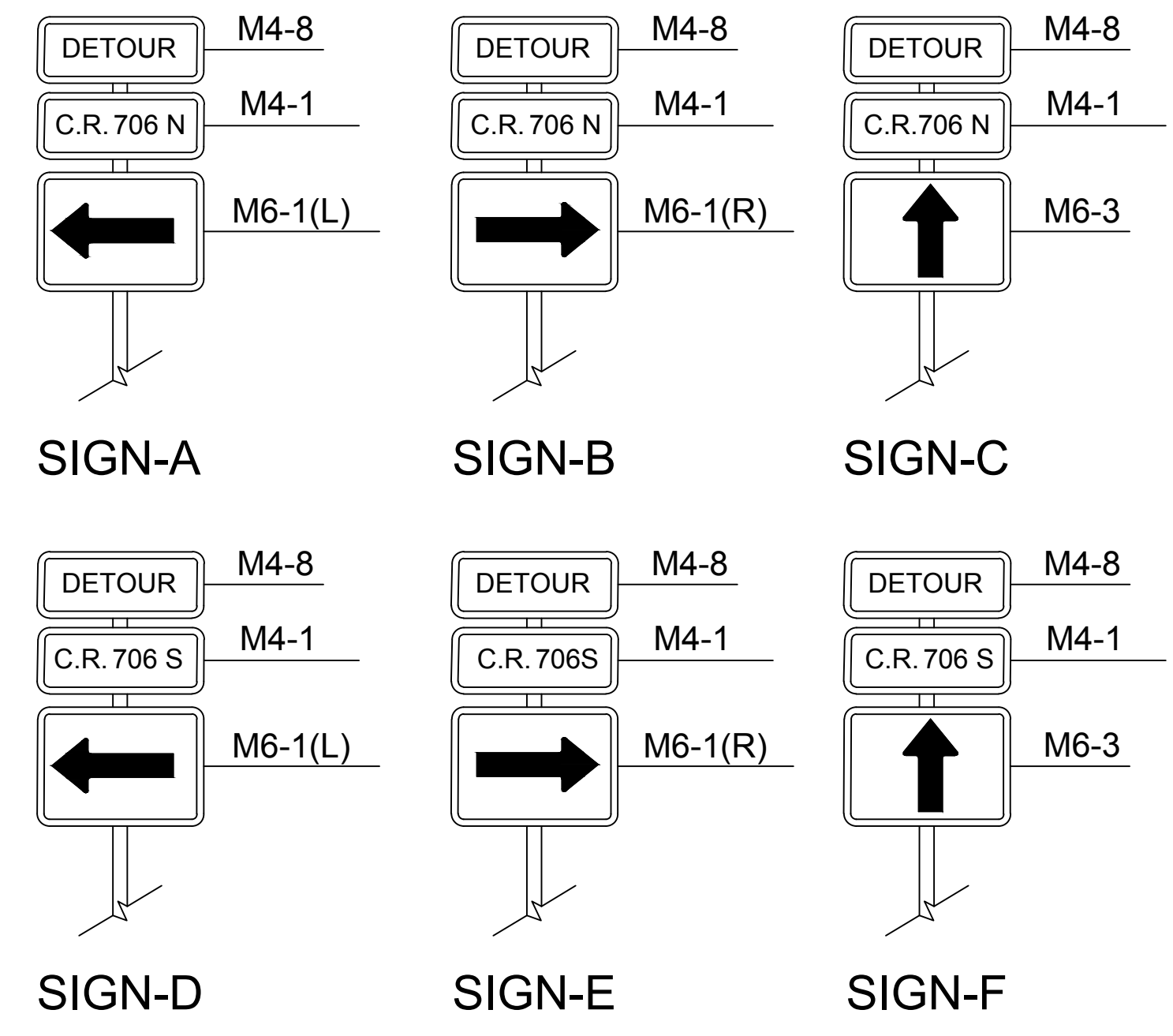
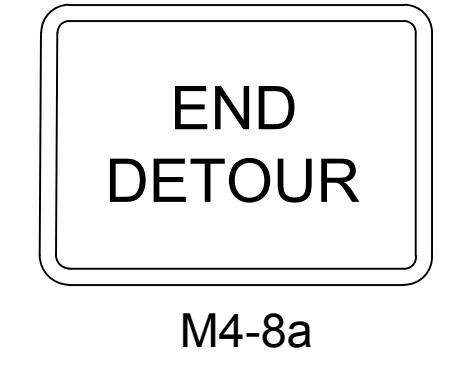


MUNICIPALITY: GLOUCESTER/PINE HILL/WINSLOW
 COUNTY: CAMDEN
 STATE: NEW JERSEY

- NOTES:
1. INSTALLATION, DIMENSIONS, COLOR, DETAILS OF SIGNS, BARRICADES, ETC. SHALL COMPLY WITH THE CURRENT MANUAL ON UNIFORM TRAFFIC CONTROL DEVICES OR NJDOT WORK ZONE SAFETY SETUP GUIDE.
 2. THE REQUIRED CONSTRUCTION WARNING SIGNS SHALL MEET NJDOT STANDARDS AND BE COVERED AS APPROVED BY THE ENGINEER WHEN NOT IN USE.
 3. IT IS THE CONTRACTOR'S RESPONSIBILITY TO COMPLY WITH THE STATE'S ONE CALL REQUIREMENTS AND TO CONTACT THE "ONE CALL SYSTEM" WITHIN THE STATE'S SPECIFIED TIME FRAME PRIOR TO START OF CONSTRUCTION.



TYPE III BARRICADE R11-2 [60"X30"] (12.5 S.F.)



CONSTRUCTION SIGN TABLE	
SIGN DESIGNATION	REQUIRED QUANTITY
-	-
-	-
-	-
-	-
-	-
-	-
-	-
-	-
-	-
-	-
CONSTRUCTION SIGN TOTALS	-

- NOTES:
1. INSTALLATION, DIMENSIONS, COLOR, DETAILS OF SIGNS, BARRICADES, ETC. SHALL COMPLY WITH THE CURRENT MANUAL ON UNIFORM TRAFFIC CONTROL DEVICES.
 2. THE REQUIRED CONSTRUCTION WARNING SIGNS SHALL MEET NJDOT STANDARDS AND BE COVERED AS APPROVED BY THE ENGINEER WHEN NOT IN USE.
 3. THERE IS NO SPECIFIC PAYMENT FOR TRAFFIC DIRECTORS, FLAGGERS, AND THE COST THEREOF SHOULD BE INCLUDED IN VARIOUS ITEMS IN THE PROPOSAL.
 4. SPACING BETWEEN SUCCESSIVE LETTERED SIGN ASSEMBLIES SHOULD BE EVERY 350 FT OR AS DIRECTED BY THE ENGINEER.

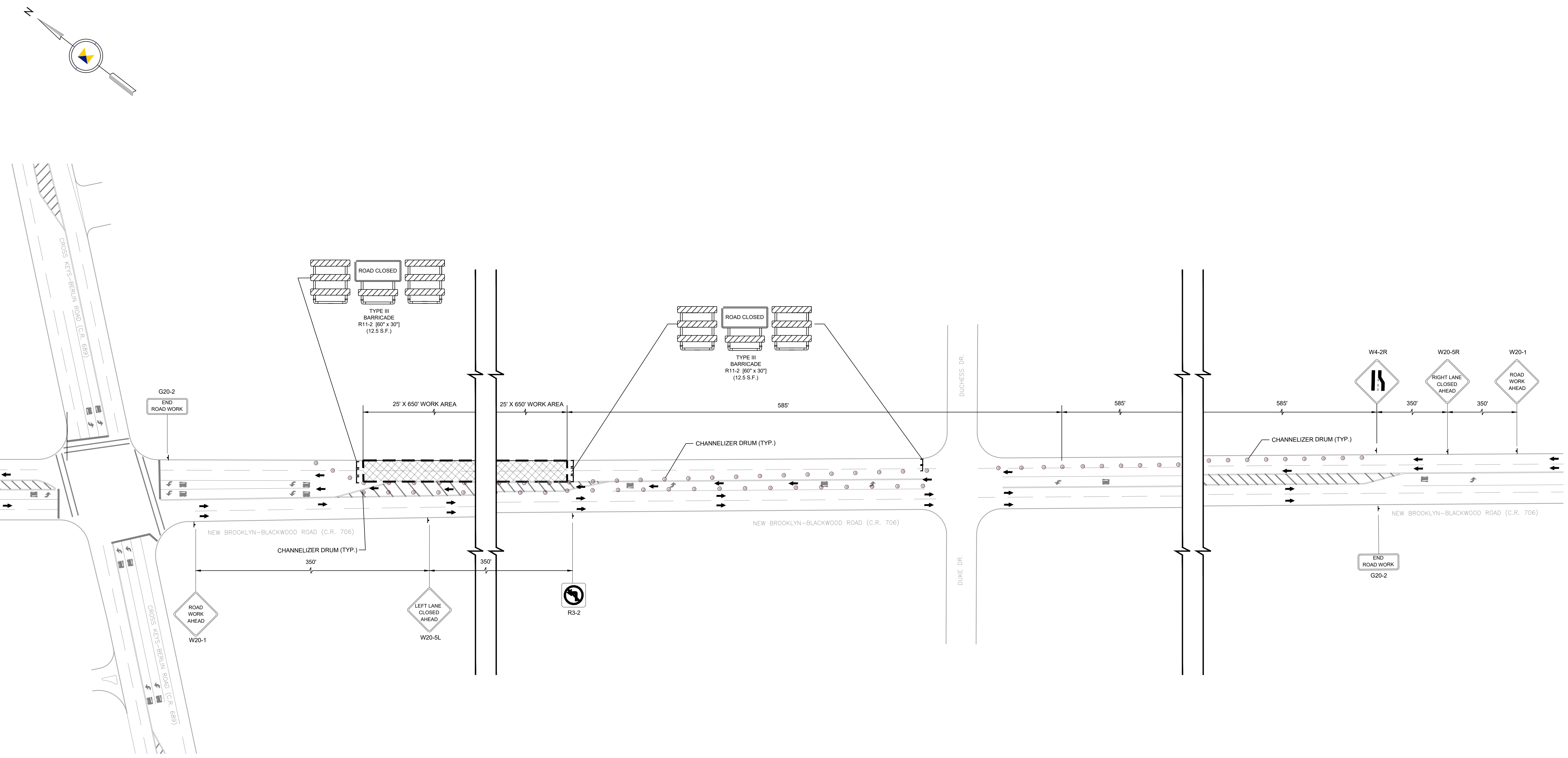
NO.	ISSUE / REVISION	DATE
1	UPDATE PER TOWNSHIP REVISION	6/27/22

SOUTH JERSEY GAS
CAMDEN COUNTY RELIABILITY PROJECT PHASE II
 BOROUGH OF PINE HILL/TOWNSHIP OF GLOUCESTER
 CAMDEN COUNTY, NEW JERSEY
 PHASE 4 DETOUR HICKSTOWN CLEMENTON ROAD
 (C.R. 706)



Prepared By:
KIELY CIVIL
 KIELY SERVICE CO.
 J.F. KIELY, P.E.
 9999 HAMILTON BOULEVARD
 BRENSINGVILLE, PA 15601
 WWW.KIELYBUILDS.COM
 (610) 841-4405

PROJECT DATA
 Project No.: 22-00052
 Dwg No.:
 Sheet No.: 8 of 9



- NOTES:**
1. INSTALLATION, DIMENSIONS, COLOR, DETAILS OF SIGNS, BARRICADES, ETC. SHALL COMPLY WITH THE CURRENT MANUAL ON UNIFORM TRAFFIC CONTROL DEVICES.
 2. THE REQUIRED CONSTRUCTION WARNING SIGNS SHALL MEET NJDOT STANDARDS AND BE COVERED AS APPROVED BY THE ENGINEER WHEN NOT IN USE.
 3. SPACING BETWEEN SUCCESSIVE LETTERED SIGN ASSEMBLIES SHOULD BE EVERY 350 FT OR AS DIRECTED BY THE ENGINEER.

NO.	ISSUE / REVISION	CHECK	APPROVE	DATE
1	UPDATE PER TOWNSHIP REVISION	LC	JH	6/27/2022
2	REVISED WORKSPACE	LC	JH	9/9/2022

SOUTH JERSEY GAS
CAMDEN COUNTY RELIABILITY PROJECT PHASE II
 BOROUGH OF PINE HILL/TOWNSHIP OF GLOUCESTER
 CAMDEN COUNTY, NEW JERSEY
PHASE IV - LANE SHIFT



Prepared By:
KIELY CIVIL
 KIELY ENGINEERING, INC.
 715 WHITE HORSE PINE
 HAMMONTON, NJ 08037
 WWW.KIELYBUILDS.COM
 (609) 666-5410

PROJECT DATA

Project No.:	22-00095
Dwg No.:	
Sheet No.:	9 OF 9